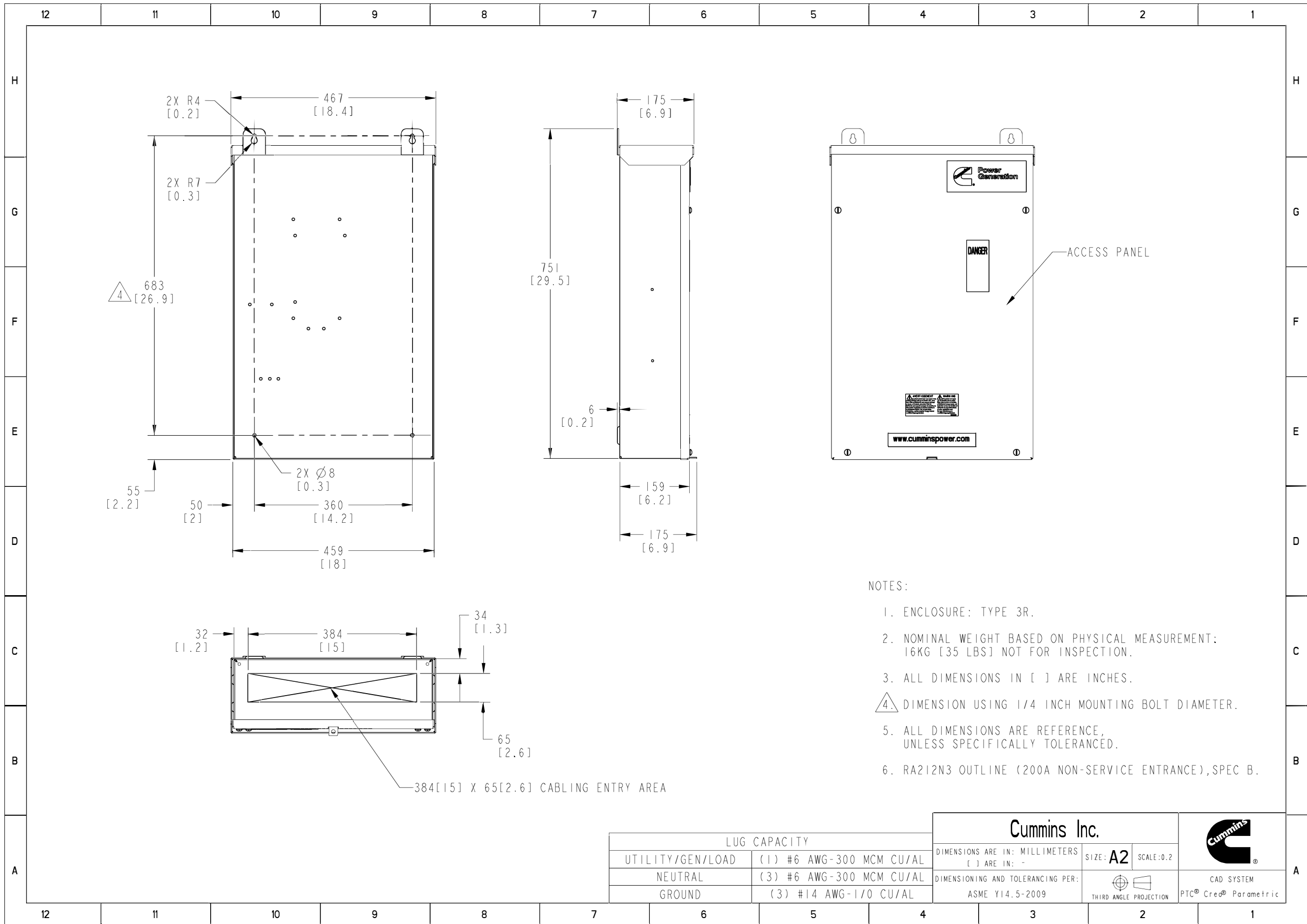


NOTES:

- ENCLOSURE: TYPE 3R.
- NOMINAL WEIGHT BASED ON PHYSICAL MEASUREMENT: 14KG [31 LBS] NOT FOR INSPECTION.
- ALL DIMENSIONS IN [ ] ARE INCHES.
- △ DIMENSION USING 1/4 INCH MOUNTING BOLT DIAMETER.
- ALL DIMENSIONS ARE REFERENCE, UNLESS SPECIFICALLY TOLERANCED.
- RA112N3 OUTLINE (100A NON-SERVICE ENTRANCE), SPEC B.

LUG CAPACITY	
UTILITY/GEN/LOAD	(1) #4 AWG-2/0 CU/AL
NEUTRAL	(3) #14 AWG-2/0 CU/AL
GROUND	(3) #14 AWG-1/0 CU/AL

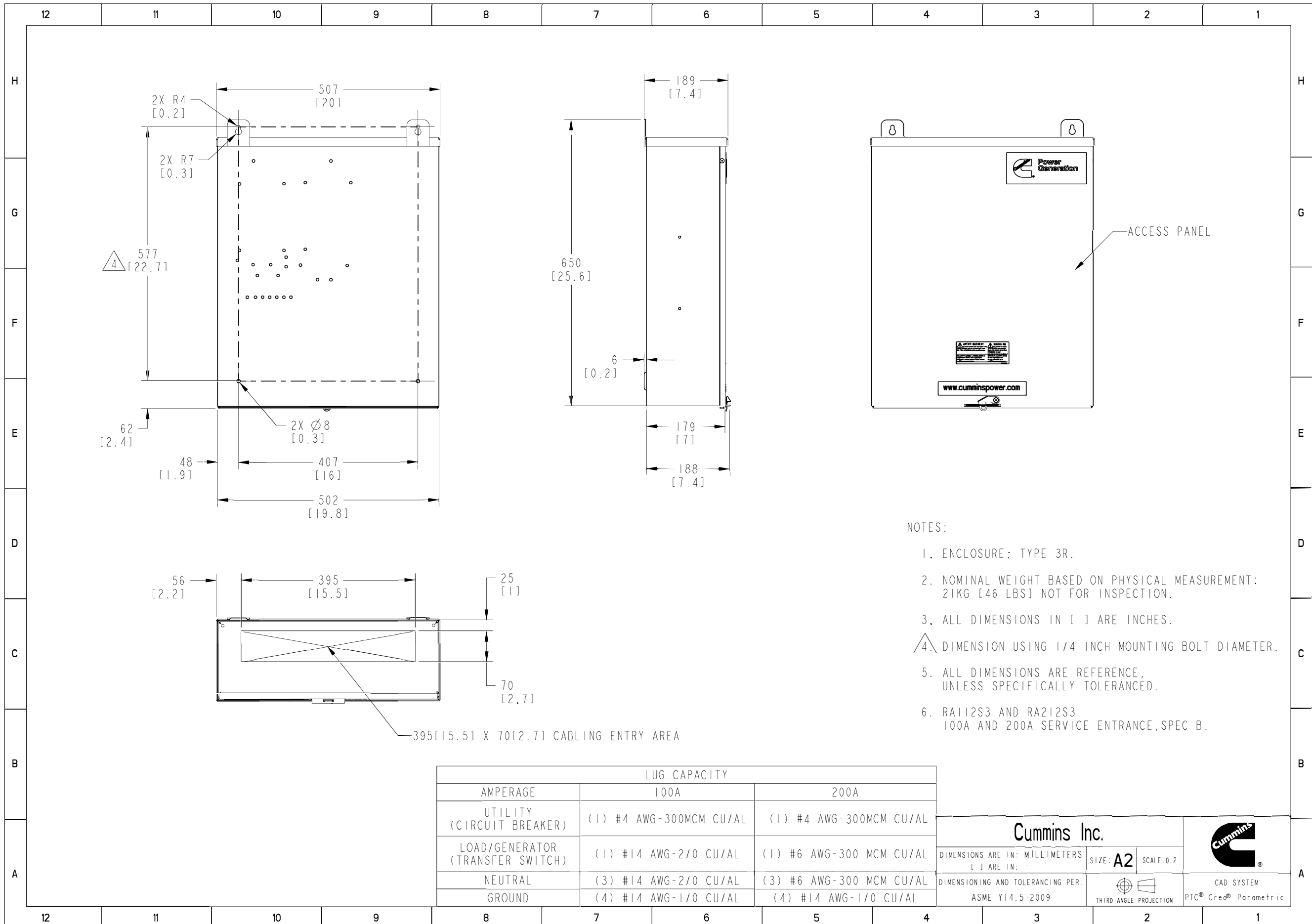
MODEL/PLATFORM:RA		THIS PART IS SIMILAR TO:A044R213	
<b>Cummins Inc.</b>			
DIMENSIONS ARE IN: MILLIMETERS [ ] ARE IN. -		SIZE: <b>A2</b>	SCALE:0.25
DIMENSIONING AND TOLERANCING PER: ASME Y14.5-2009		 THIRD ANGLE PROJECTION	
		CAD SYSTEM PTC® Creo® Parametric	



- NOTES:
- ENCLOSURE: TYPE 3R.
  - NOMINAL WEIGHT BASED ON PHYSICAL MEASUREMENT: 16KG [35 LBS] NOT FOR INSPECTION.
  - ALL DIMENSIONS IN [ ] ARE INCHES.
  - △ DIMENSION USING 1/4 INCH MOUNTING BOLT DIAMETER.
  - ALL DIMENSIONS ARE REFERENCE, UNLESS SPECIFICALLY TOLERANCED.
  - RA212N3 OUTLINE (200A NON-SERVICE ENTRANCE), SPEC B.

LUG CAPACITY	
UTILITY/GEN/LOAD	(1) #6 AWG-300 MCM CU/AL
NEUTRAL	(3) #6 AWG-300 MCM CU/AL
GROUND	(3) #14 AWG-1/0 CU/AL

<b>Cummins Inc.</b>		
DIMENSIONS ARE IN: MILLIMETERS [ ] ARE IN: -	SIZE: <b>A2</b> SCALE: 0.2	
DIMENSIONING AND TOLERANCING PER: ASME Y14.5-2009		CAD SYSTEM PTC® Creo® Parametric



- NOTES:
- ENCLOSURE: TYPE 3R.
  - NOMINAL WEIGHT BASED ON PHYSICAL MEASUREMENT: 21KG [46 LBS] NOT FOR INSPECTION.
  - ALL DIMENSIONS IN [ ] ARE INCHES.
  - DIMENSION USING 1/4 INCH MOUNTING BOLT DIAMETER.
  - ALL DIMENSIONS ARE REFERENCE, UNLESS SPECIFICALLY TOLERANCED.
  - RA112S3 AND RA212S3 100A AND 200A SERVICE ENTRANCE, SPEC B.

AMPERAGE	LUG CAPACITY	
	100A	200A
UTILITY (CIRCUIT BREAKER)	(1) #4 AWG-300MCM CU/AL	(1) #4 AWG-300MCM CU/AL
LOAD/GENERATOR (TRANSFER SWITCH)	(1) #14 AWG-2/0 CU/AL	(1) #6 AWG-300 MCM CU/AL
NEUTRAL	(3) #14 AWG-2/0 CU/AL	(3) #6 AWG-300 MCM CU/AL
GROUND	(4) #14 AWG-1/0 CU/AL	(4) #14 AWG-1/0 CU/AL

**Cummins Inc.**

DIMENSIONS ARE IN: MILLIMETERS [ ] ARE IN: -

SIZE: **A2** SCALE: 0.2

DIMENSIONING AND TOLERANCING PER: ASME Y14.5-2009

THIRD ANGLE PROJECTION

CAD SYSTEM PTC® Creo® Parametric